



# ***Are you truly confident that the continuity of your business is protected?***

***RUBiQ® BCM assured continuity!***

***Confidence in overall company preparedness to deal with any crisis situation.***

[www.rubi-q.com](http://www.rubi-q.com)







[www.rubi-q.com](http://www.rubi-q.com)

In today's fast-paced world with complex supply chains and increasing customer demands, it has become vital for management to ensure that they have gone through the process of clearly defining what the impact of serious business interruption means to their bottom line.

***The BCI, Business Continuity Institute, describes Business Continuity as***

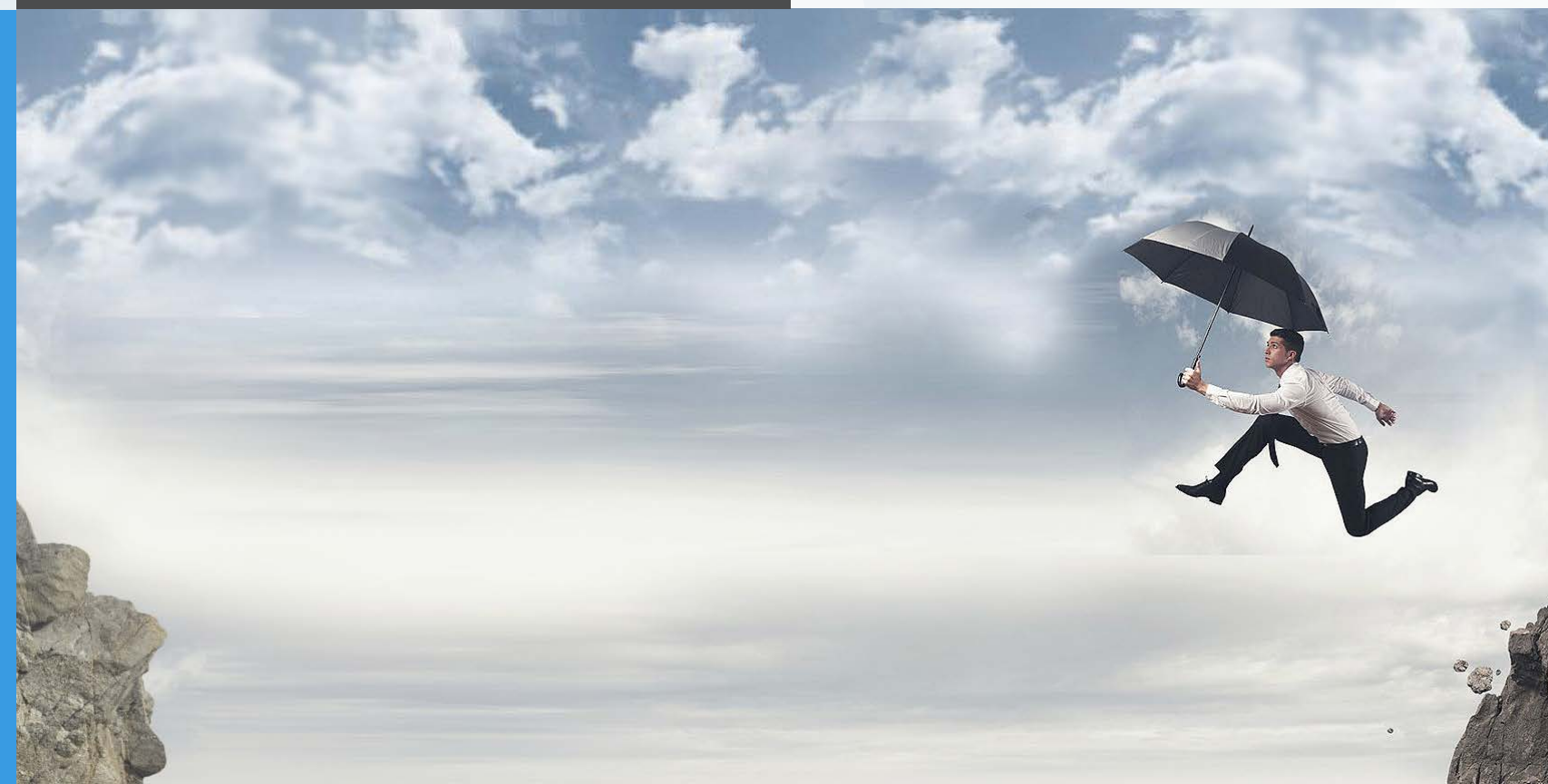
***“Just common sense”.***

It is about taking responsibility for your business and enabling it to stay on course whatever storms it is forced to weather, it is about *“keeping calm and carrying on”*.

***The RUBiQ® Business Efficiency Management Solution is built on international standards***

such as ISO 31000, ISO 9001 and ISO 27001, while it is fully aligned to meeting all the requirements for ISO 22301:2012 for an effective and continuously managed process of Business Continuity.

RUBiQ® BCM supports an Integrated Automated PDCA, Plan, Do, Check, Act process related to meeting all requirements defined within the ISO 22301 Standard for Business Continuity Management.









www.rubi-q.com



***A fully controlled and managed process for all business continuity requirements from conducting the Business Impact Assessment through to assured continuous improvement over the entire BCM Management system.***

***By using the RUBIQ® Platform for Business Continuity management, companies, their directors and executives are able to ensure that:***

- ✓ All potential continuity exposes are clearly identified
- ✓ All threats that could result in crisis are determined and controlled
- ✓ A full and complete Crisis Management Plan is documented and managed in the Live system
- ✓ Business resumption and recovery plans are dynamic, interactive and effectively tested
- ✓ All BCM gaps are determined and corrected
- ✓ The system is consistently audited with any findings managed and closed in a timely manner



**Guideline BizTech (Pty) Ltd**  
Unit 9 Block D  
Southdowns Office Park  
Karee St, Irene,  
Centurion, 0062  
South Africa

+27 (0)11 465 4822  
info@rubiqbiz.com

